

Customer: Rocky Mountain Botanicals LLC
Address: Greeley, CO 80536

Sample ID: Super C Tincture, Batch AI-116
Matrix: Tincture
Labnumber: 23B0119-01



Density (g/mL): .9561

Cannabinoid Profile

Test Conditions: 20°C

Extraction Technician: SH

Analytical Chemist: CB

Extraction Date(s)	Analysis Date(s)
2/27/2023	2/27/2023

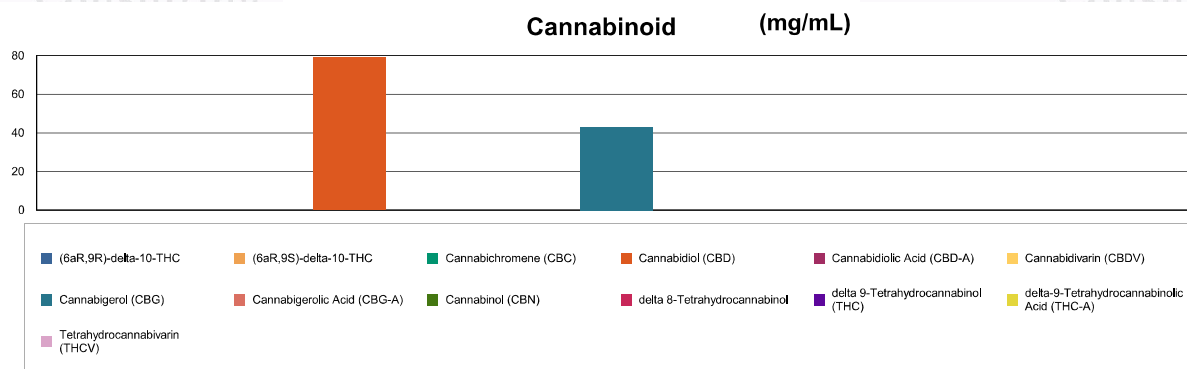
Cannabinoids (HPLC)		Results	
	LOD (mg/mL)	%	mg/mL
Cannabidivarin (CBDV)	<0.40		
Cannabidiolic Acid (CBD-A)	<0.40		
Cannabigerolic Acid (CBG-A)	<0.40		
Cannabigerol (CBG)		4.32	43.2
Cannabidiol (CBD)		7.89	78.9
Tetrahydrocannabivarin (THCV)	<0.40		
Cannabinol (CBN)	<0.40		
Cannabichromene (CBC)	<0.40		
delta 9-Tetrahydrocannabinol (THC)	<0.70		
delta-9-Tetrahydrocannabinolic Acid (THC-A)	<0.70		
delta 8-Tetrahydrocannabinol	<0.70		
(6aR,9S)-delta-10-THC	<0.70		
(6aR,9R)-delta-10-THC	<0.70		
Cannabinoids Total		%	mg/mL
Max Active THC (delta-9-tetrahydrocannabinol)		<0.07	<0.70
Max Active CBD		7.89	78.90
Total Cannabinoids		12.20	122.00

Following USDA guidelines on uncertainty, Altitude Consulting's uncertainty is calculated to be +/- 3% for all cannabinoids using a coverage factor of 2 (95% confidence interval). Measurement uncertainty has not been factored into reported values.

Blank results indicate the compound was below the limit of detection.

Test Deviation:

Report corrected on 02/28/23



Gary Brook - Laboratory Director - 2/28/2023

Reporting Limits will vary based on sample extraction weight used for the analysis.

The results of this report are based solely on the sample submitted and cannot be reproduced. Decision Rule: Measurement uncertainty is not accounted for in the reported values.

Results are based solely on calculated numbers. Altitude Consulting makes no Statements of conformity. **Pesticide, metal, and microbial analyses are subcontracted to ISO**

17025 laboratories.

Customer: Extraxit LLC
Address: 1312 Blue Spruce Drive #2
Fort Collins, CO 80524
Sample ID: A - Super C Tincture, Batch AI-116
Matrix: Tincture
Labnumber: 23B0119-01



Density (g/mL): .9561

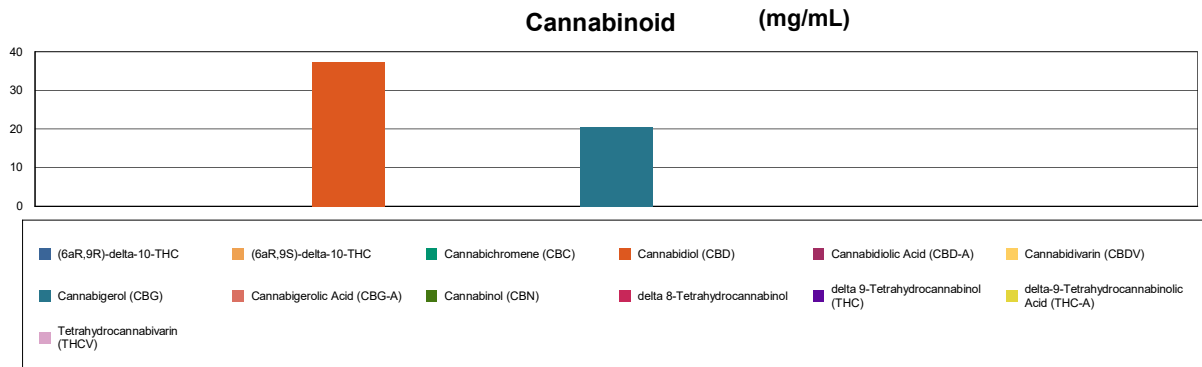
Cannabinoid Profile

Test Conditions: 20°C
Extraction Technician: SH
Analytical Chemist: SH

Extraction Date(s)	Analysis Date(s)
2/27/2023	2/27/2023

Cannabinoids (HPLC)		Results	
	LOD (mg/mL)	%	mg/mL
Cannabidivarin (CBDV)	<0.20		
Cannabidiolic Acid (CBD-A)	<0.20		
Cannabigerolic Acid (CBG-A)	<0.20		
Cannabigerol (CBG)		2.04	20.4
Cannabidiol (CBD)		3.73	37.3
Tetrahydrocannabivarin (THCV)	<0.20		
Cannabinol (CBN)	<0.20		
Cannabichromene (CBC)	<0.20		
delta 9-Tetrahydrocannabinol (THC)	<0.40		
delta-9-Tetrahydrocannabinolic Acid (THC-A)	<0.40		
delta 8-Tetrahydrocannabinol	<0.40		
(6aR,9S)-delta-10-THC	<0.40		
(6aR,9R)-delta-10-THC	<0.40		
Cannabinoids Total		%	mg/mL
Max Active THC (delta-9-tetrahydrocannabinol)		<0.04	<0.40
Max Active CBD		3.73	37.30
Total Cannabinoids		5.78	57.80

Following USDA guidelines on uncertainty, Altitude Consulting's uncertainty is calculated to be +/- 3% for all cannabinoids using a coverage factor of 2 (95% confidence interval). Measurement uncertainty has not been factored into reported values.
Blank results indicate the compound was below the limit of detection.



[Signature]

Gary Brook - Laboratory Director - 2/28/2023

Reporting Limits will vary based on sample extraction weight used for the analysis.

The results of this report are based solely on the sample submitted and cannot be reproduced. Decision Rule: Measurement uncertainty is not accounted for in the reported values.
Results are based solely on calculated numbers. Altitude Consulting makes no Statements of conformity. **Pesticide, metal, and microbial analyses are subcontracted to ISO 17025 laboratories.**