



Customer: Extraxit LLC
Address: 1312 Blue Spruce Drive #2
Fort Collins, CO 80524
Sample ID: A - Super Spectrum Tincture, Batch AK-118-R1
Matrix: Tincture
Labnumber: 23L0021-01

Density (g/mL): .9602

Cannabinoid Profile

Test Conditions: 17°C

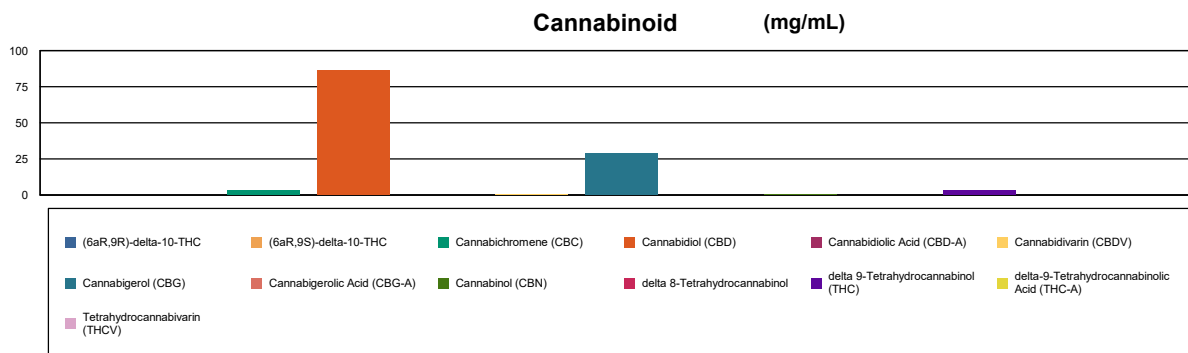
Extraction Technician: SH

Analytical Chemist: SH

Extraction Date(s)	Analysis Date(s)
12/4/2023	12/5/2023

Test Method: Cannabinoid Potency by HPLC		Results	
	LOD (mg/mL)	%	mg/mL
Cannabidivarin (CBDV)		0.02	0.246
Cannabidiolic Acid (CBD-A)	<0.10		
Cannabigerolic Acid (CBG-A)	<0.10		
Cannabigerol (CBG)		2.87	28.7
Cannabidiol (CBD)		8.61	86.1
Tetrahydrocannabivarin (THCV)	<0.10		
Cannabinol (CBN)		0.01	0.095
Cannabichromene (CBC)		0.33	3.34
delta 9-Tetrahydrocannabinol (THC)		0.29	2.93
delta-9-Tetrahydrocannabinolic Acid (THC-A)	<0.30		
delta 8-Tetrahydrocannabinol	<0.30		
(6aR,9S)-delta-10-THC	<0.30		
(6aR,9R)-delta-10-THC	<0.30		
Cannabinoids Total		%	mg/mL
Max Active THC (delta-9-tetrahydrocannabinol)		0.29	2.93
Max Active CBD		8.61	86.10
Total Cannabinoids		12.10	121.00

Following USDA guidelines on uncertainty, Altitude Consulting's uncertainty is calculated to be +/- 5% for all cannabinoids using a coverage factor of 2 (95% confidence interval). Measurement uncertainty has not been factored into reported values. Blank results indicate the compound was below the limit of detection.



[Signature]

Gary Brook - Laboratory Director - 12/5/2023

Reporting Limits will vary based on sample extraction weight used for the analysis.

The results of this report are based solely on the sample submitted and cannot be reproduced. Decision Rule: Measurement uncertainty is not accounted for in the reported values.

Results are based solely on calculated numbers. Altitude Consulting makes no Statements of conformity. **Pesticide, metal, and microbial analyses are subcontracted to ISO**

17025 laboratories.



Customer: Extraxit LLC
Address: 1312 Blue Spruce Drive #2
Fort Collins, CO 80524
Sample ID: B - Super Spectrum Lotion, Batch AC-155-R1
Matrix: Topical
Labnumber: 23L0021-02

Cannabinoid Profile

Test Conditions: 17°C

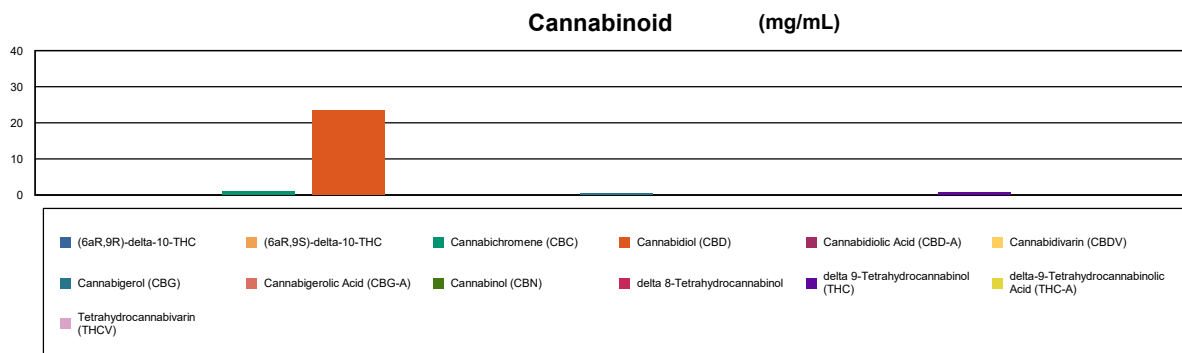
Extraction Technician: SH

Analytical Chemist: SH

Extraction Date(s)	Analysis Date(s)
12/4/2023	12/5/2023

Test Method: Cannabinoid Potency by HPLC		Results	
	LOD (mg/mL)	%	mg/mL
Cannabidivarin (CBDV)	<0.080		
Cannabidiolic Acid (CBD-A)	<0.080		
Cannabigerolic Acid (CBG-A)	<0.080		
Cannabigerol (CBG)		0.04	0.386
Cannabidiol (CBD)		2.35	23.5
Tetrahydrocannabivarin (THCV)	<0.080		
Cannabinol (CBN)	<0.080		
Cannabichromene (CBC)		0.10	0.959
delta 9-Tetrahydrocannabinol (THC)		0.08	0.834
delta-9-Tetrahydrocannabinolic Acid (THC-A)	<0.20		
delta 8-Tetrahydrocannabinol	<0.20		
(6aR,9S)-delta-10-THC	<0.20		
(6aR,9R)-delta-10-THC	<0.20		
Cannabinoids Total		%	mg/mL
Max Active THC (delta-9-tetrahydrocannabinol)		0.08	0.83
Max Active CBD		2.35	23.50
Total Cannabinoids		2.57	25.70

Following USDA guidelines on uncertainty, Altitude Consulting's uncertainty is calculated to be +/- 5% for all cannabinoids using a coverage factor of 2 (95% confidence interval). Measurement uncertainty has not been factored into reported values. Blank results indicate the compound was below the limit of detection.



END OF REPORT

END OF REPORT

Gary Brook - Laboratory Director - 12/5/2023

Reporting Limits will vary based on sample extraction weight used for the analysis.

The results of this report are based solely on the sample submitted and cannot be reproduced. Decision Rule: Measurement uncertainty is not accounted for in the reported values.

Results are based solely on calculated numbers. Altitude Consulting makes no Statements of conformity. **Pesticide, metal, and microbial analyses are subcontracted to ISO**

17025 laboratories.