



Customer: Extraxit LLC
Customer Sample ID: Hansen - Farmer 2 - Spent
Laboratory Number: 19L0258-02



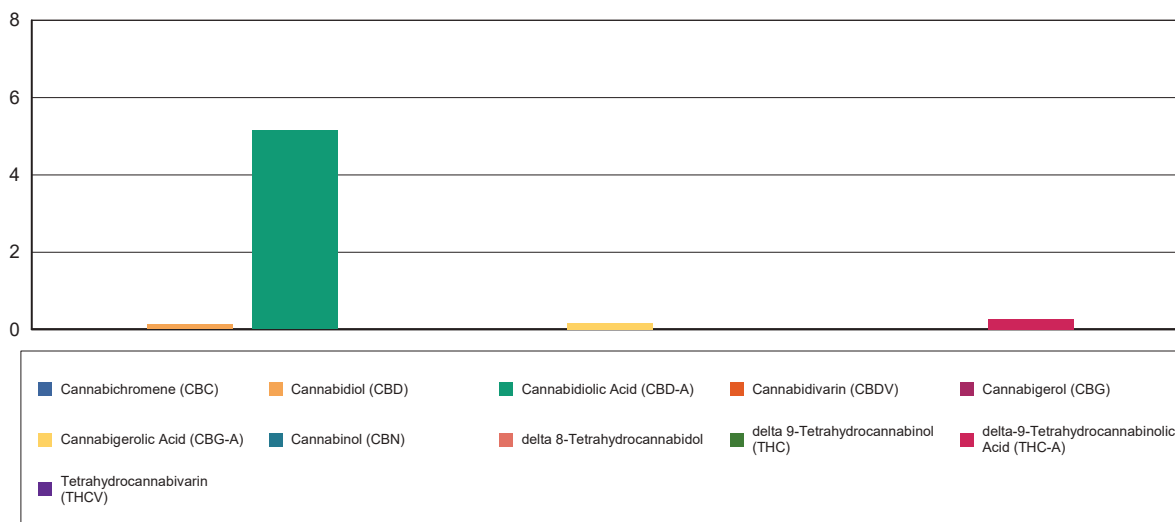
Cannabinoid Profile

Extraction Technician: CB
Analytical Chemist: CB

Extraction Date(s)	Analysis Date(s)
12/16/2019	12/17/2019

Cannabinoids (HPLC)		Results	
	LOD (mg/g)	%	mg/g
Cannabidiarin (CBDV)	<0.050		
Cannabidiolic Acid (CBD-A)		0.52	5.2
Cannabigerolic Acid (CBG-A)		0.02	0.2
Cannabigerol (CBG)	<0.050		
Cannabidiol (CBD)		0.01	0.1
Tetrahydrocannabivarin (THCV)	<0.050		
Cannabinol (CBN)	<0.050		
delta 9-Tetrahydrocannabinol (THC)	<0.050		
delta 8-Tetrahydrocannabinol	<0.050		
Cannabichromene (CBC)	<0.050		
delta-9-Tetrahydrocannabinolic Acid (THC-A)		0.03	0.3
Cannabinoids Total		%	mg/g
Max Active THC		0.02	0.24
Max Active CBD		0.46	4.65
T.Active Cannabinoids		0.01	0.13
Total Cannabinoids		0.57	5.71
Ratios			
19.33:1 CBD to THC		0.05:1 THC to CBD	

Cannabinoid (mg/g)



Altitude Consulting, LLC utilizes NIST traceable Reference Standards and Certified Reference Material to calibrate analytical instruments along with proven analytical methods. The methods are applied in the most ethical manner following good laboratory practice guidelines. The results of this report are based solely on the sample submitted and cannot be reproduced.