



Customer: **Extraxit LLC**
 Customer Sample ID: **Sparky Test Batch Spent (0.75:1)**
 Laboratory Number: **19K0086-02**



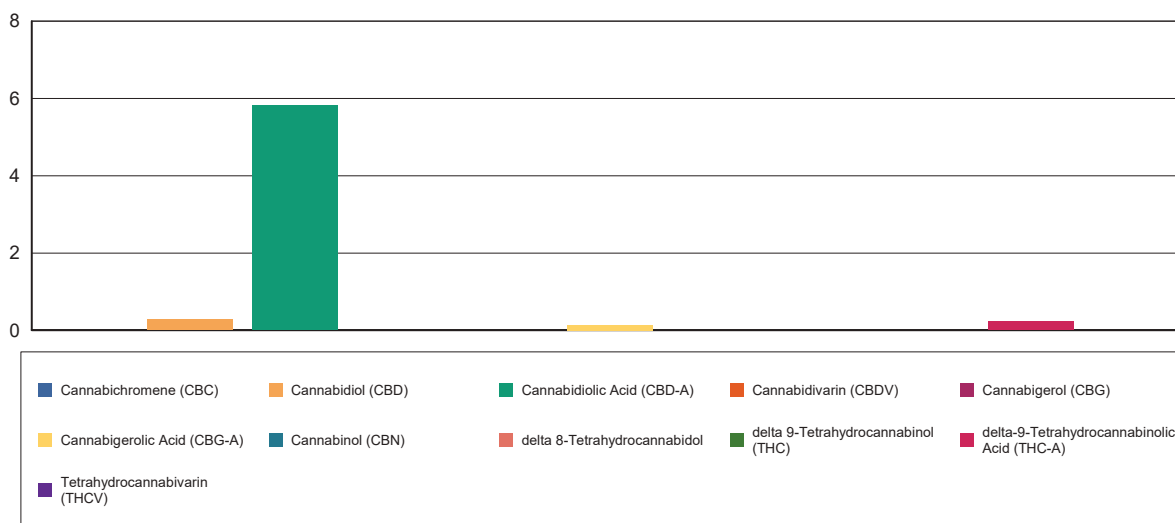
Cannabinoid Profile

Extraction Technician: RH
 Analytical Chemist: CB

Extraction Date(s)	Analysis Date(s)
11/6/2019	11/6/2019

Cannabinoids (HPLC)		Results	
	LOD (mg/g)	%	mg/g
Cannabidivarin (CBDV)	<0.10		
Cannabidiolic Acid (CBD-A)		0.58	5.81
Cannabigerolic Acid (CBG-A)		0.01	0.134
Cannabigerol (CBG)	<0.10		
Cannabidiol (CBD)		0.03	0.278
Tetrahydrocannabivarin (THCV)	<0.10		
Cannabinol (CBN)	<0.10		
delta 9-Tetrahydrocannabinol (THC)	<0.10		
delta 8-Tetrahydrocannabinol	<0.10		
Cannabichromene (CBC)	<0.10		
delta-9-Tetrahydrocannabinolic Acid (THC-A)		0.02	0.228
Cannabinoids Total		%	mg/g
Max Active THC		0.02	0.20
Max Active CBD		0.54	5.38
T.Active Cannabinoids		0.03	0.28
Total Cannabinoids		0.65	6.45
Ratios			
26.73:1 CBD to THC		0.04:1 THC to CBD	

Cannabinoid (mg/g)



Altitude Consulting, LLC utilizes NIST traceable Reference Standards and Certified Reference Material to calibrate analytical instruments along with proven analytical methods . The methods are applied in the most ethical manner following good laboratory practice guidelines. The results of this report are based solely on the sample submitted and cannot be reproduced.